

# Deslogest

DESLORELIN ACETATE



**over**®

# Deslogest

DESLORELIN ACETATE

The ability to pharmacologically manage the **estrous cycle** of equines results in evident benefits for veterinarians and breeders. If **ovulation exact times** are known, **pregnancy rates can be maximized** and breeding programs can be made more efficient.



CONTROLLED  
ESTROUS CYCLE



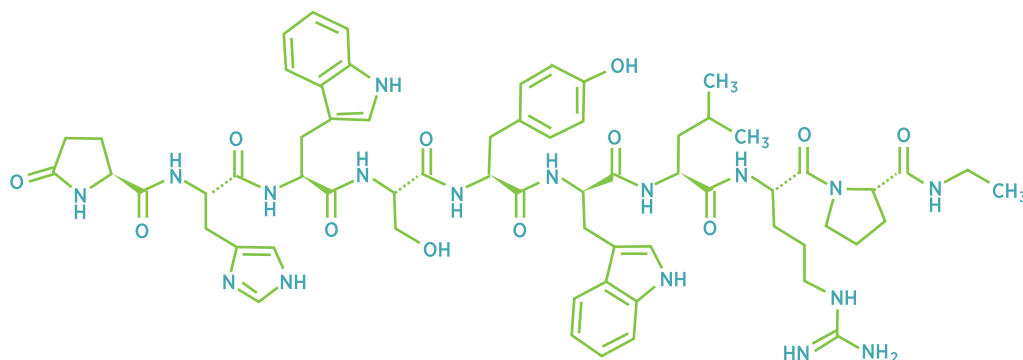
EXACT TIME  
OVULATION



SUCCESSFUL  
BREEDING  
PROGRAM.

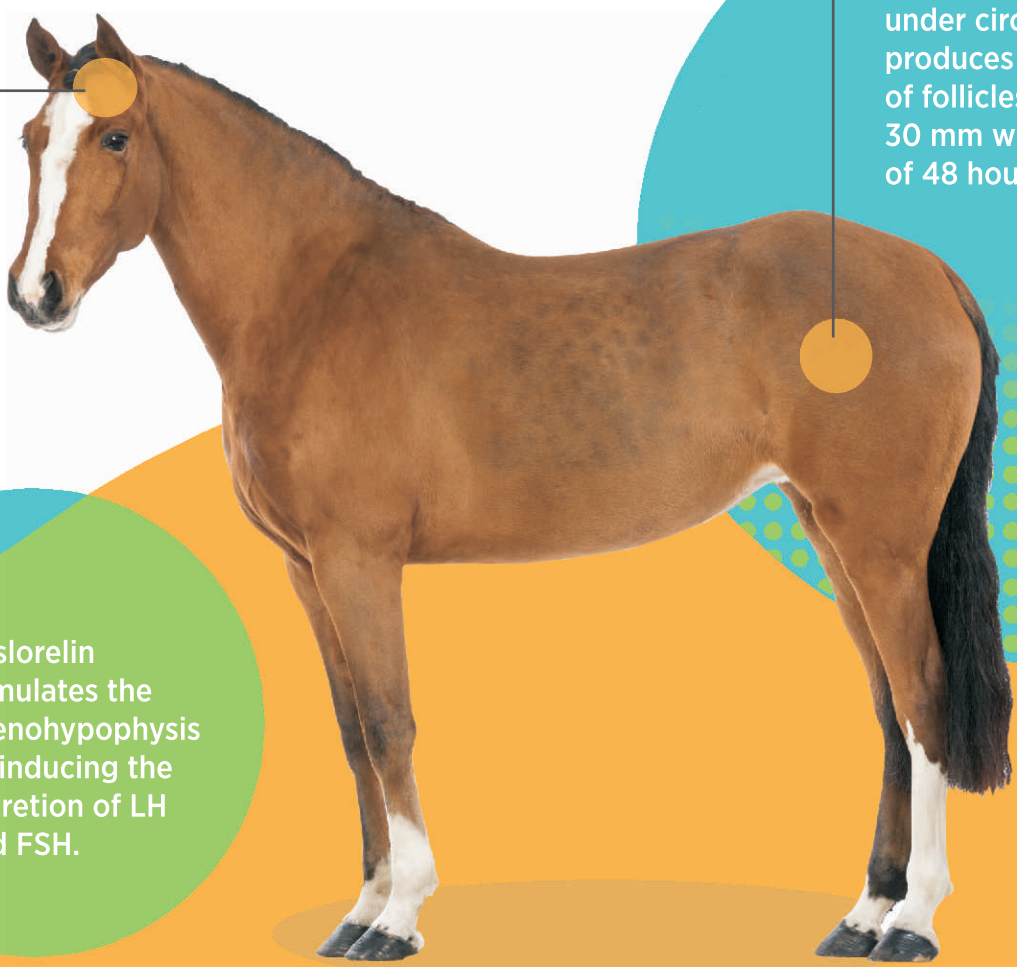
## How can Deslogest be of help ?

**Deslogest** is a ready-to-use solution based on deslorelin, a synthetic analogue of the gonadotrophin releasing hormone (GnRH). Deslorelin is a small peptide whose structure differs from natural GnRH. These chemical modifications in the molecule confer deslorelin a greater biological activity.



# Deslogest: action mechanism.

**Deslogest** contains **deslorelin**, an agent that stimulates the adenohypophysis by inducing the secretion of the follicle-stimulating hormone (FSH) and the luteinizing hormone (LH). Increased LH concentration in the circulation system promotes the ovulation in those mares having follicles greater than 30 mm. As a consequence, **ovulation** takes place within 48 hours from the product application.



Deslorelin stimulates the adenohypophysis by inducing the secretion of LH and FSH.

In the ovary, the LH under circulation produces the ovulation of follicles greater than 30 mm within a period of 48 hours.

# Deslogest advantages



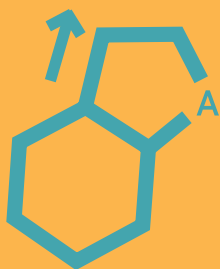
Low-volume  
single dose  
(1 ml).



No cold chain  
is required.



Manufactured  
under international  
quality standards,  
such as the GMP.



Active ingredients  
of high  
pharmaceutical  
degree of purity.



Easy intramuscular  
application on the  
neck base.

Wide safety margin. Doses 10  
times higher than therapeutic  
ones did not generate  
anaphylactic reactions or  
inflammation on the  
application site.





# Technical essay

Intended to check the efficacy of a formulation of deslorelin 1.8 mg/ml (Deslogest) intramuscularly applied as an ovulatory agent in mares.

**Place:**

Universidad Católica de Córdoba (U.C.C.), Córdoba, Argentina.

**Participants:**

Vets Diego Esborraz and Gustavo Zimmermann, from OVER's Technical Service Department. They are members of the Equine Reproduction Service of the Veterinary Hospital belonging to Universidad Católica de Córdoba.

**Period:**

March-April 2014.

**Materials and methods:**

For the field test, 9 mares of different ages, races and body conditions were selected.

In order to observe the follicular dynamics, the edema severity and the estrous cycle stage in which the mares were, all the animals were examined by means of transrectal ultrasound scan (Mindary DP-6600, linear transducer of 5 MHz).

Since the mares were at different stages of their

estrous cycle, a prostaglandin analogue was applied for their resynchronization [single dose of 500 µg of D+Cloprostenol (Prostal from OVER)].

Mares with follicles of 30 mm or greater and a uterine edema severity of degree 1 & 2 were treated with 1 ml of Deslogest (intramuscular application on the neck base).

In order to estimate the approximate ovulation time, all animals were examined by ultrasound scan diagnosis with an interval of 4 hours (from the 30<sup>th</sup> hour after the application) until their ovulation was confirmed.

**Summary:**

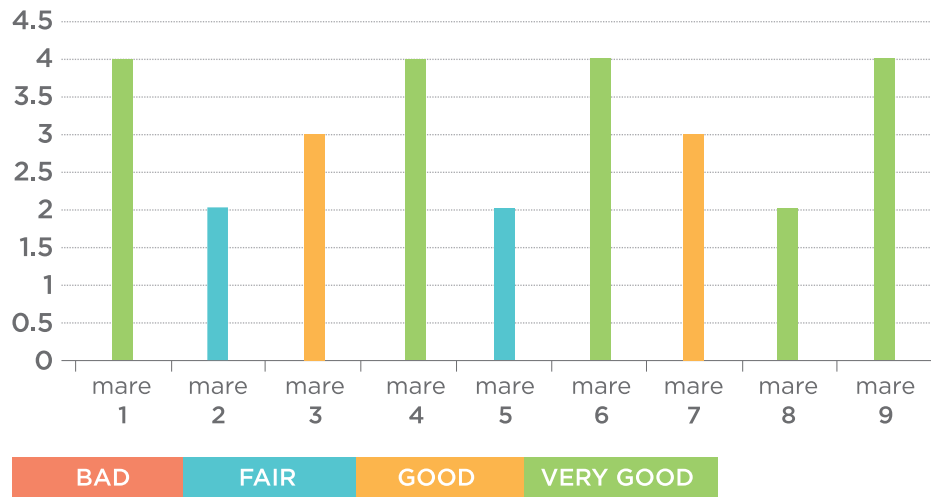
Based on the observations, the efficacy of Deslogest (deslorelin acetate 1.8 mg/ml) to produce ovulation in 100% of the mares could be demonstrated. 78% of them ovulated between 36 and 42 hours after product application, while the remaining 22% ovulated between 42 and 48 hours after product application.



# Deslogest

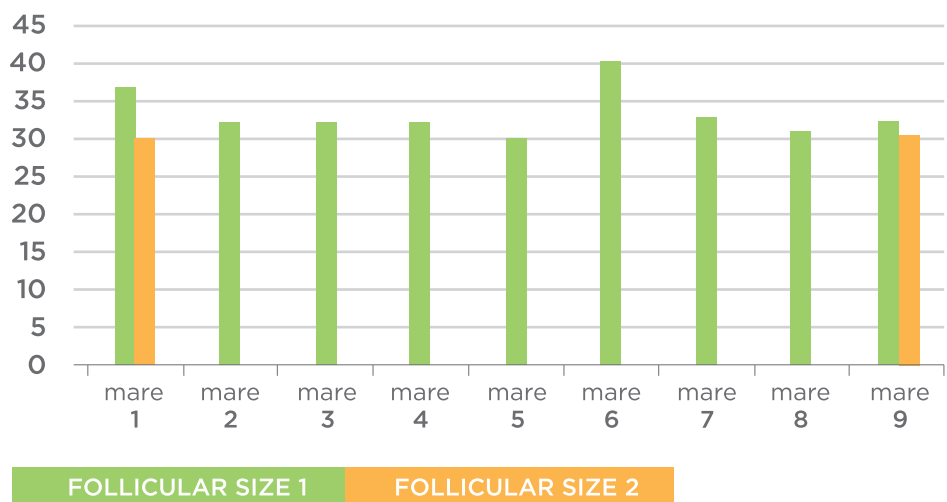
**GRAPH 1**

Mares' body condition.



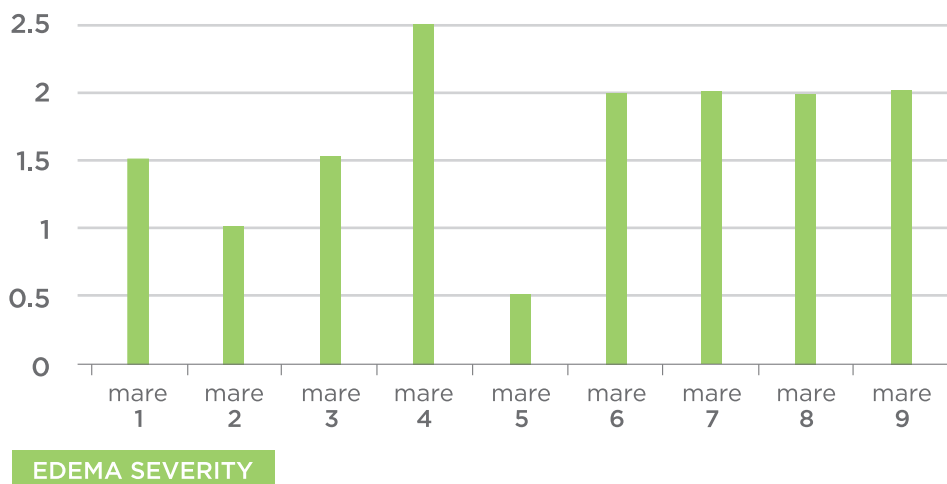
**GRAPH 2**

Follicular size in mm (follicle 1 and follicle 2) shown by each mare at the time Deslogest was applied.



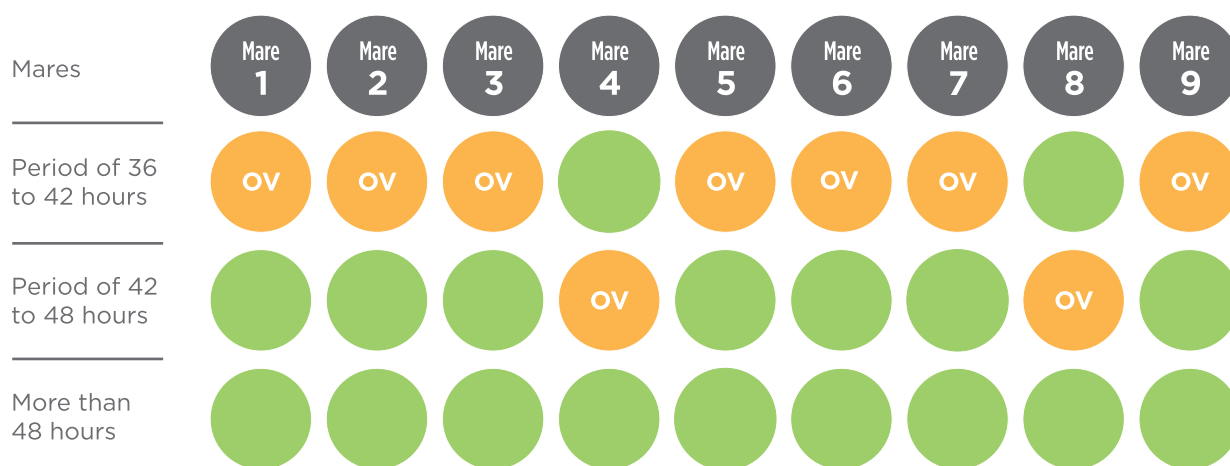
**GRAPH 3**

Uterine edema severity (degrees 1,2,3) of mares at the time Deslogest was applied.



## GRAPH 4

Estimated ovulation time of mares based on their ultrasound scan follow-up.



# Deslogest

**Formula:**

Each 1 ml, it contains:

Deslorelin acetate..... 1.8 mg

Formulation agents.....q.s.

**Indications of use:**

It is indicated to induce the ovulation within 48 hours from estrus in mares with normal cycles and ovarian follicles greater than 30 mm in diameter.

**Administration:**

It is administered intramuscularly on the neck base.

**Dosage:**

Single dose of 1 ml per each animal, equivalent to 1.8 mg.



**OVER. Organización Veterinaria Regional S.R.L.**

Veterinary Specialties Laboratory.

Alfonsina Storni 680, (S2447) San Vicente, Santa Fe, Argentina.

**Tel. Fax:** +54 (0)3492 470696. e-mail: labover@over.com.ar

**www.over.com.ar**